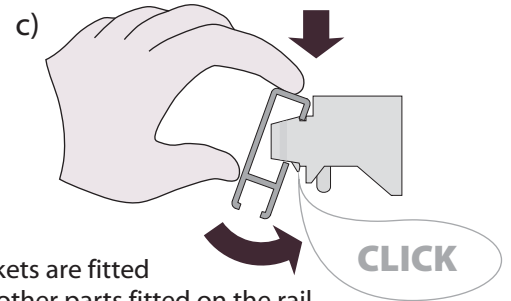
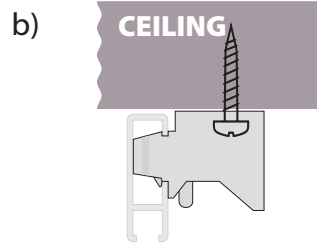
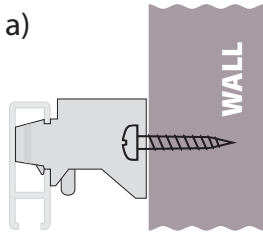


# Instructions for Fitting a Roman Blind

## 1. Fitting of the Rail Brackets

Fit the plastic brackets with the attached screws. The brackets may be fitted in 2 different positions:

- To the wall above the window (Drawing A).
- Inside the window (Drawing B).



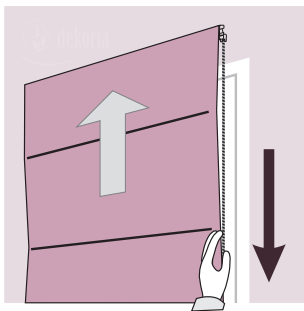
Space the brackets evenly across the full length of the rail, ensuring that the brackets are fitted at the same height. Ensure that the brackets are not in the same position as any other parts fitted on the rail.

## 2. Fitting the Rail onto the Brackets

Fit the rail by clipping the rail (with its attached blind) to the brackets. Firstly, place the top part of the rail onto the brackets and secondly press the bottom part of the rail until the rail is clipped into position. (Drawing C).

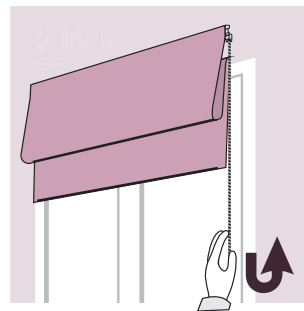
# Operating a Roman Blind

### Opening the Blind



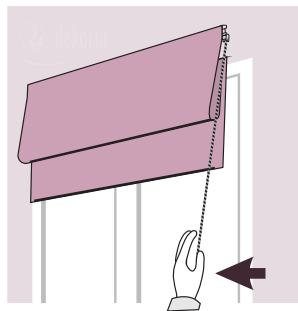
Pull the side cord to open the blind. Always hold the end of the cord. (the plastic piece).

### Stopping the Blind at a Particular Position



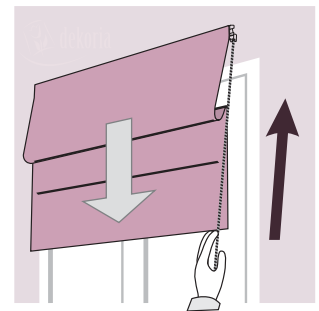
Slowly and gently release the cord at a particular position in order to stop the blind at this position.

### To Release the Blind



Pull the cord gently to release the blind.

### Closing the Blind

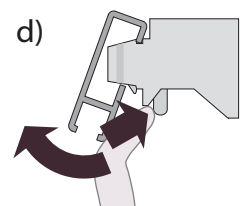


After releasing the blind, lift the cord up to the required position.

# Removing the Blind

1. To remove the blind along with its rail from the brackets, press the small plastic arm on the bracket and turn the rail to the side. (Drawing D).

2. Washing - **It is strictly recommended to dry clean roman blind.**



### Safety

The contents of the Roman Blind pack contains small pieces and a loose cord. **Keep out of reach of children!**