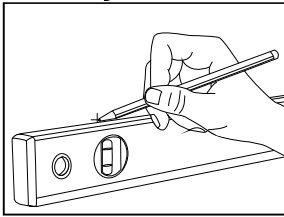
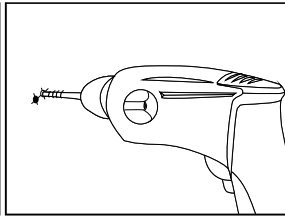


# Instructions for Fitting a Roman Blind with a Cassette Track System

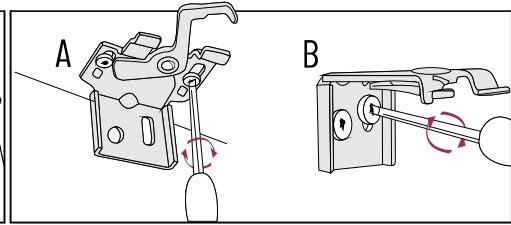
## 1. Installing the Brackets



Mark the preferred position of the brackets on the wall (brackets may be installed on the wall or on the ceiling).

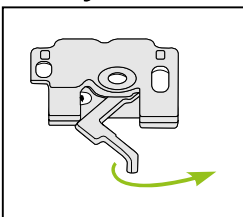


Drill holes for screws or wall plugs (screws and wall plugs are included in the pack).

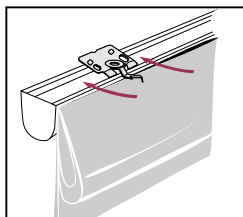


Install the brackets  
A - wall  
B - ceiling

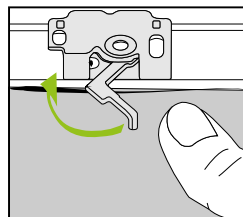
## 2. Fitting the Cassette Track onto the Brackets



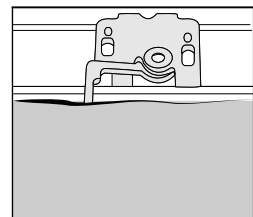
Open the locking arm.



Position the cassette track on the brackets and gently push the track towards the wall.



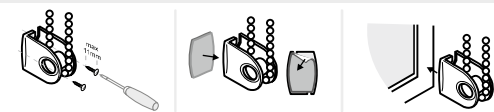
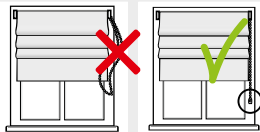
Push the locking arm across into a closed position.



## 3. Important note

A cassette track operated blind can also be fitted directly onto the window frame. This does not require drilling any holes and special brackets for this purpose can be ordered from [www.dekoria.co.uk](http://www.dekoria.co.uk)

### Installing the cord tension device

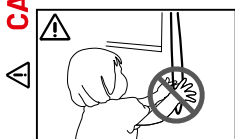


Install the cord tension device on the wall or directly onto the window frame with double sided tape in a position that will keep the cord taut and secure. Please note screws are not included in the pack



Risk of strangulation.

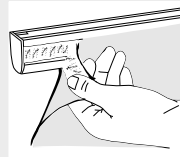
Keep cords and strings out of reach of children.



Risk of swallowing and choking.

The contents of the pack contain small pieces.

### Washing a Cassette Track Roman Blind



The blind is attached to the cassette track with velcro fittings, which enables safe washing of the fabric.

#### TO WASH THE BLIND:

- Unclip the cassette track from the brackets.
- Unfold the blind on a flat surface e.g. on a table or on the floor.
- Unstring the blind, remove dowels and detach the blind from the track.

The blind is ready for washing.

Please wash fabric as per instructions provided on the care label. After washing and drying, iron the blind, attach dowels, re-string the blind and re-attach it to the track with velcro fittings.

