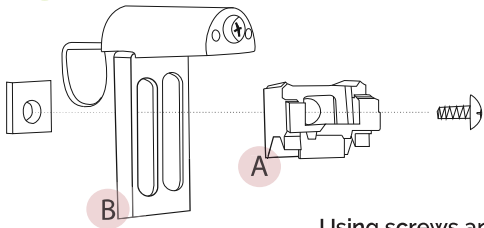


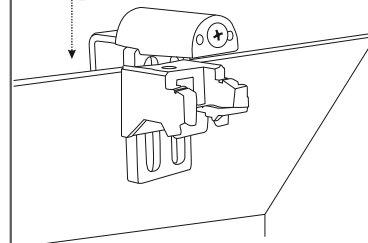
Instructions for fitting a roman blind with an aluminium rail to a window frame (with non-invasive fittings)

1.



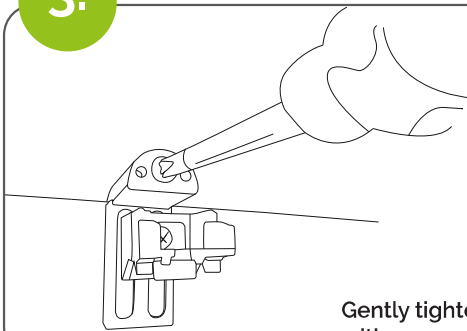
Using screws and rectangular nuts attach blind fitting (A) to a window frame bracket (B).

2.



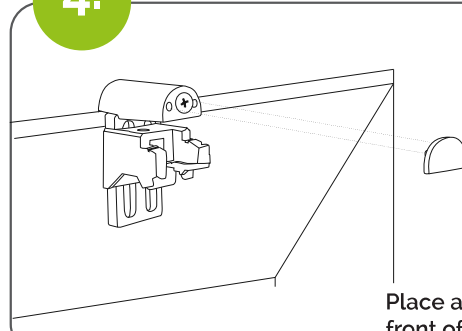
Place the bracket over the edge of the window frame.

3.



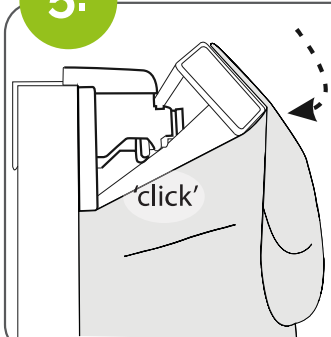
Gently tighten the bracket with a screwdriver.

4.



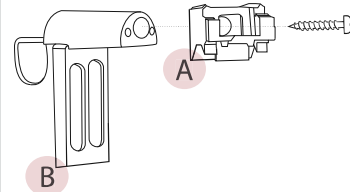
Place a cover over the front of the bracket.

5.



Position the rail on the brackets and clip it into place.

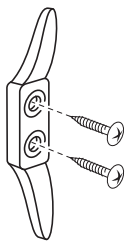
Alternative Installation Method



A blind may also be installed around 5 cm away from the window frame.

Unscrew the blind fitting (B) and attach it higher up the window bracket (A), as shown in the picture.

Installing the cord cleat

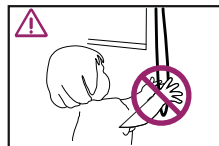


To make sure the cord is not dangling by the window, it is recommended to install a cord cleat.

Fit the cord cleat by the window and use it to wrap loose cord around it.



CAUTION



Risk of strangulation.

Keep cords and strings out of reach of children.



The contents of the pack contain small pieces. Risk of swallowing and choking.